

IBM Blueworks Live

Easily streamline, document and run processes in the cloud



Highlights

- **Document**
 - Discover, model and document complex processes by creating Process Blueprints
- **Configure**
 - Automate simple processes by configuring Process Apps in 90 seconds using approval and checklist templates
- **Collaborate**
 - Improve your processes by collaborating across your team and leveraging the feedback of the expert community
- **Begin**
 - Access Blueworks Live anytime, anywhere in the cloud; visit blueworkslive.com for a free 30-day trial

Many people waste valuable time at work sorting through emails to find important attachments and necessary approvals. This old way of doing work is difficult and inefficient. Blueworks Live changes this by allowing you to automate processes that are currently run via email. Easily collaborate on daily tasks with co-workers across teams, departments, and the entire organization. Access communities focused on process improvement. Create Process Blueprints in Blueworks Live to discover, map, and document your processes in a way that is structured and usable by anyone in your company. Keep your team connected, on the same page, and working effectively. Blueworks Live is built to improve the way you work. Get started today with a 30-day free trial at www.blueworkslive.com

Better than email for your simple processes

All your work is in one place

Are you tired of running your processes over email? Email chains get confusing, replies overlap one another causing rework, and work gets lost. Email was never built for ad-hoc processes, but IBM Blueworks Live is! You will be able to easily manage and automate your work that is run today through email. Set up your process in Blueworks Live and you're done—in as little as 90 seconds!

All your work is visible

Blueworks Live gives you the real-time visibility to take control of how your work gets done. As a manager, you will be able to see who is working each task, where they are in the process, and also have the ability to reassign work to make sure deadlines are met. As a process participant, you can easily see what work is coming your way, search for work that you have already done, and choose to follow what's happening with the work that involves you. Blueworks Live delivers the insight needed to allow everyone to make better use of their time and to make their jobs easier.

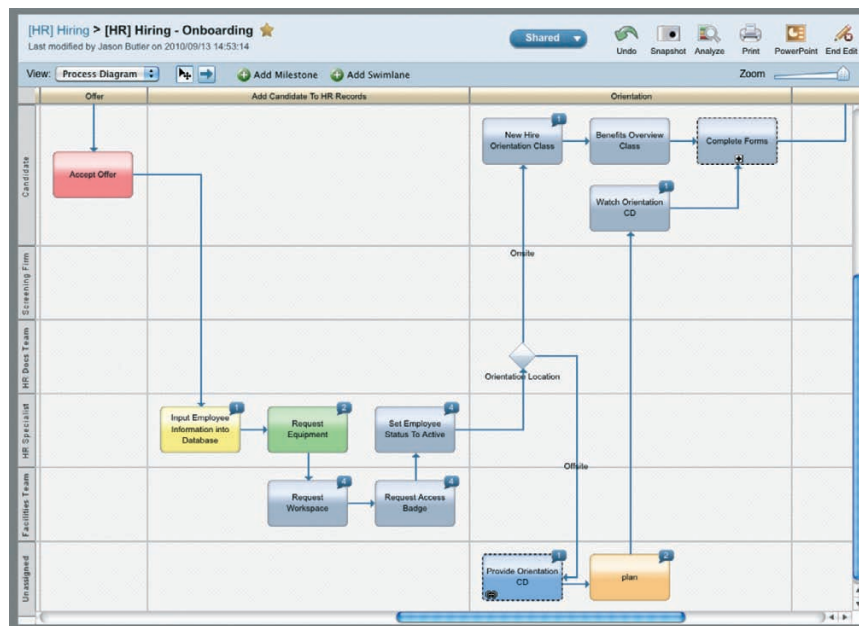
Anyone, anywhere can improve the way they work

The destination to do your job

Blueworks Live is a safe and secure private community accessible from any Internet browser with no software to install or maintain. Blueworks Live is the place where all your tasks and processes can be stored. With Blueworks Live anyone in your organization can work on the same process in real time from anywhere in the world. You will be able to document processes, as well as build, run and participate in Process Apps quickly and easily using simple templates for checklists or approvals. Even the best business process management (BPM) suites take 90 days to release a Process App—with Blueworks Live you are just 90 seconds away from improving the way you work.

Process made easy

Blueworks Live brings a simple, no-hassle, method to process documentation and discovery. Blueworks Live was designed with everyone in your organization in mind; it's easy for novices to build simple Process App, yet feature-rich enough for experts to model and analyze even the most complex processes by creating a Process Blueprint. Building a Process App in Blueworks Live is easier than using a presentation tool or creating a list in a word processor. Blueworks Live gives every employee, partner and supplier the ability to participate in making your business run better.



IBM Blueworks Live's Process Blueprints provide simple, collaborative process documentation that enable every employee, partner, and supplier to participate in communicating and improving an organization's business processes, ideas, and initiatives.

Take your people to the next level

The new process social

Social Networking meets BPM in Blueworks Live. Built-in communication features, such as instant messaging, live news feeds and the ability to leave comments enable you to immediately react to process changes that affect your projects. In addition, you will be able to leverage Blueworks Live's expert community of process and industry knowledge, allowing you to generate great ideas and buy-in for your own BPM program. With these enhanced collaboration features, Blueworks Live provides your team with a smarter, faster way to improve your business processes.

Understand your complex processes

Blueworks Live makes it easy to develop complete Process Apps for your simple processes—but it can also help you make sense of even the most complex ones. For example, Blueworks Live's advanced analysis capabilities give you insight into how your process is performing and what systems are impacted. Because you are now collaborating with your whole organization in a secure private community, you will be able to break down the process silos to achieve alignment and consensus across your organization. When you are ready to deploy these complex processes, Blueworks Live's Process Blueprints seamlessly flow into the IBM WebSphere® BPM suite.

Process improvement is everybody's business. Where do you fit in?



Business user

Your business users have a single view to find work assigned to them, to find work that they are following, or to start new work. They can complete a step in a process by filling out a very simple form—they can comment and even reassign the work if the process allows. Business users can view their team's process activity, make comments, and ask for help.

“Everyone is engaged in the process and people are participating; it’s really worked out very well ... This is as easy as it looks.”

—Rachel Pace-Marion, Director of Operations, PRC

Project manager

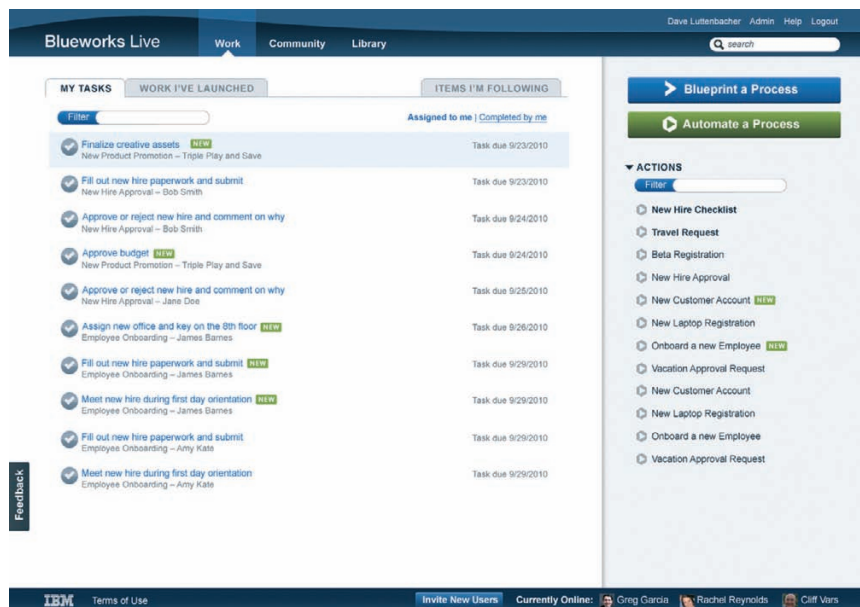
Project managers can configure and run simple processes for their groups without IT involvement. They can get the status of their team's work at a glance, without sending emails or making phone calls. Project managers now have confidence that their teams won't miss deadlines, with built-in support for due dates and notifications.

Business analyst

Business analysts can blueprint all processes in a single system and easily share them with their team. They can now use an interactive stream to see a summary of process changes, view feedback from others, and make comments. Business analysts can browse and use process templates based on industry and process best practices.

Process Center of Excellence (COE) leader

Process COE Leaders have insight into processes that used to be manual and can better identify process problem areas. They have a single location for storing and managing process documentation, automation and collaboration data. Process COE Leaders can easily communicate best practices and process strategy internally while learning from the larger public community.



IBM Blueworks Live gives you increased visibility into all you work. Easily see all the tasks that are assigned to you. Choose to follow work that is relevant to you. Configure Process Apps or Blueprint a Process all in one place.

It's easy to get started

Just visit www.blueworkslive.com and sign up for your Free 30-Day Trial.

Invite everyone on your team to join in. See how easy it is to collaborate on your processes. Be notified instantly on when changes are being made to processes that involve you.

Be sure to check out some of these features:

Expert community. Social media is changing the way we do business. Stay up to speed on all the latest process improvement buzz by participating in our built-in community. Leverage industry knowledge to help improve the way you work.

Industry templates. Not sure of where to begin with documenting your processes? We have some process templates ready for you to customize. This is a great way to learn how to use the documentation and mapping tools that are available to you in Blueworks Live.

“We were looking for something that was easy to use, rapid to implement and would provide immediate tangible benefits within a couple of days if not weeks.”

—Andy Kim, Director of IT Governance, MedImpact

Editor License

- USD50 per user per month
- Configure process apps
- Create new Process Blueprints and provide feedback
- Modify, publish or “share” Process Blueprints

Contributor License

- USD10 per user per month
- Configure process apps
- Review and comment on Process Blueprints
- Unable to create or modify Process Blueprints

For more information

To learn more about IBM Blueworks Live, please contact your IBM marketing representative or IBM Business Partner, or visit the following website: www.blueworkslive.com

Additionally, financing solutions from IBM Global Financing can enable effective cash management, protection from technology obsolescence, improved total cost of ownership and return on investment. Also, our Global Asset Recovery Services help address environmental concerns with new, more energy-efficient solutions. For more information on IBM Global Financing, visit: ibm.com/financing



© Copyright IBM Corporation 2010

IBM Corporation
Software Group
Route 100
Somers, NY 10589 U.S.A.

Produced in the United States of America
September 2010
All Rights Reserved

IBM, the IBM logo, ibm.com and WebSphere are trademarks or registered trademarks of International Business Machines Corporation in the United States, other countries, or both. If these and other IBM trademarked terms are marked on their first occurrence in this information with a trademark symbol (® or ™), these symbols indicate U.S. registered or common law trademarks owned by IBM at the time this information was published. Such trademarks may also be registered or common law trademarks in other countries. A current list of IBM trademarks is available on the web at “Copyright and trademark information” at ibm.com/legal/copytrade.shtml

Other company, product or service names may be trademarks or service marks of others.



Please Recycle